

Foundry exhibit casts connections with art world

By Andrea Cavallier
Staff Writer

ASHEBORO — “Carolina Bronze: Casting Connections,” a new exhibition at the Randolph Arts Guild, is not only about casting sculpture, but is also about casting connections with artists and works of art all around the world.

The 37 pieces of bronze artwork will be on display until Aug. 31 at the Moring Arts Center’s Sara Smith Self Gallery, 123 Sunset Ave., Asheboro.

The exhibition encompasses the work of several artists with



Cast in bronze



Seth Cheek / The Courier-Tribune

Below, Jay Rotberg, right, talks about his work, 'The Tree Yoga Pose,' to Ed Walker during a reception Tuesday that opened the 'Carolina Bronze: Casting Connections' sculptural exhibit at the Randolph Arts Guild in Asheboro. The bronze pieces will be on display through Aug. 31 and are the works of several artists, including Larry Bechtel's 'Jefferson Bust,' above.

Foundry exhibit casts connections with art world

By Andrea Cavallier
Staff Writer

ASHEBORO — "Carolina Bronze: Casting Connections," a new exhibition at the Randolph Arts Guild, is not only about casting sculpture, but is also about casting connections with artists and works of art all around the world.

The 37 pieces of bronze artwork will be on display until Aug. 31 at the Moring Arts Center's Sara Smith Self Gallery, 123 Sunset Ave., Asheboro.

The exhibition encompasses the work of several artists with a significant connection to the Carolina Bronze foundry



Seth Cheek / The Courier-Tribune

See **BRONZE**, page 6A

Bronze

From page 1A

in Seagrove and its artists.

Derrick Sides, director of the guild, said he feels fortunate to be so close to a local foundry.

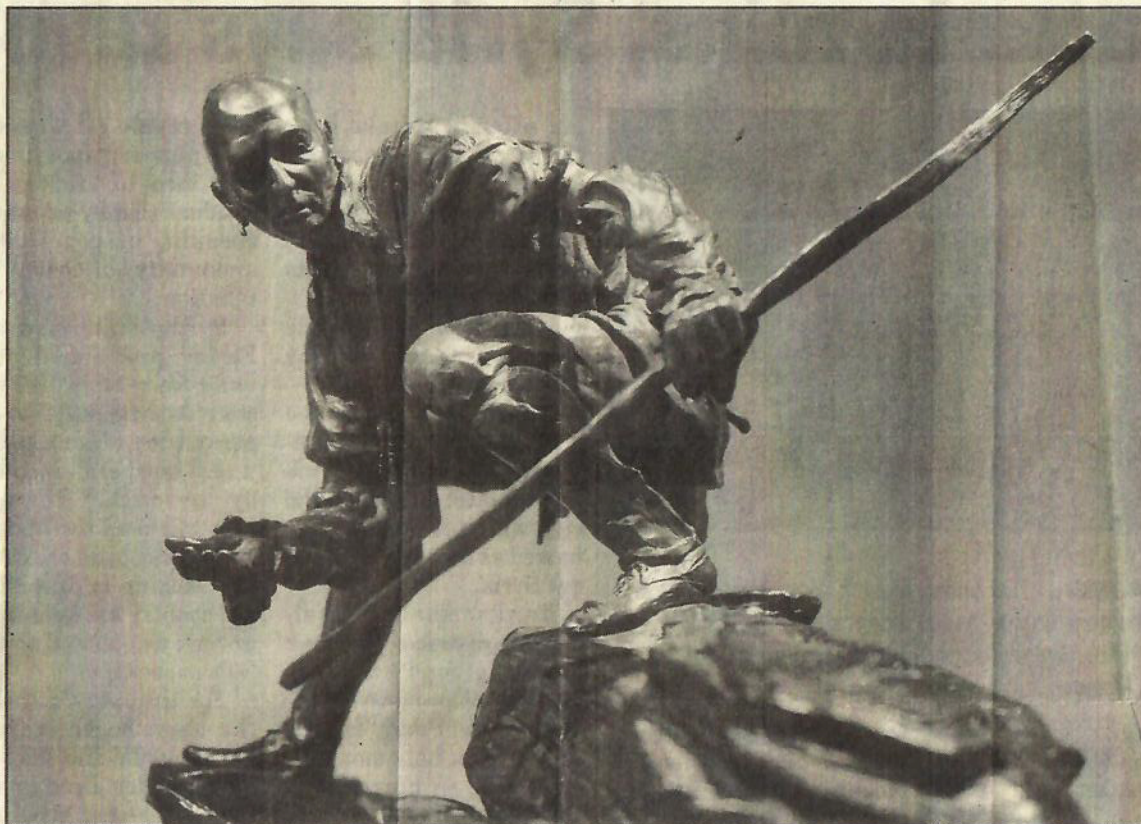
"It's rare for a foundry to contribute pieces to a gallery show," Sides said. "We're lucky to have them."

The guild tries to incorporate, not only a wide range of artists, but various styles of art as well.

Carolina Bronze is a premier fine arts foundry that serves artists all over the United States. Founded in 1990 by Ed Walker, it employs highly trained and experienced artisans, craftsmen, designers and engineers. They specialize in fine arts bronze casting and fabrication, using both traditional techniques and state-of-the-art digital tools which include high resolution 3D scanning, CNC machining and Rapid Prototyping.

They offer lost wax and sand-cast bronze as well as fully digitally integrated fabrication services.

The exhibition at the arts guild features a variety of work from Dedi McHam, Michel Last-



Seth Cheek / The Courier-Tribune

ON THE HUNT — Chas Fagan's 'Woodland Indian' shows attention to detail that the Yale University-educated artist employs. In 2004, in a highlight of his sculpture career, Chas created an 8-foot bronze of President George H.W. Bush, now on display in Sesquicentennial Park in Houston, Texas.

er, Richard Pumfrey, Larry Bechtel, Chas Fagan, Leslie Hudson-Tolles, John Wendelbo, Steve Bickly, Jay Rotberg, Rose Ross, Jim White, Ray Moose, Barry Stone Bailey and Bill Donnan. Walker also has pieces in the show.

Many of the pieces were cast at Carolina Bronze and demonstrate the skill and craftsmanship necessary to produce sculptural works of this nature.

"One of the neat things about the whole casting process is that it can be compared to a good, old-fashioned barn raising," Sides said. "All the artists come together with their mold and metal. They each have a chance to pour and together cast some great works of art."

Sides noted that folks may see bronze sculptures all over the world as public commissions; some were cast by these artists.

"Not only are these artists coming together to help each other cast their sculptures, but they are creating art out of objects that have been around for thousands of years," Sides said. "The tools and technology is different, but the fundamentals are the same."

For more information, call the Randolph Arts Guild at 629-0399 or email arts@asheboro.com. The center is open Monday-Friday, 10 a.m.-5 p.m.; and Saturday, 10 a.m.-2 p.m.

■ **Contact:** 626-6123 or acavallier@courier-tribune.com